

MyLab™ X9

Opening
infinite
horizons



NEVER STOP SEEING THE UNSEEN.



When research is oriented towards the evolution of products and solutions for the continuous improvement of diagnosis in terms of imaging and workflow, when research is focused on expanding technological potential, and exploring unexplored horizons, the result is pure innovation.



EXPLORING THE INSIDE .

Opening infinite horizons

MyLab™ X9

Powerful and **innovative**, MyLab™X9 is the new Esaote **X ULTRA™** platform embedding state-of-the-art technologies with **top level image quality** and exploring infinite horizons in ultrasound imaging.

Artificial Intelligence combined with insightful workflow and **multimodality comprehensive connectivity** drive the radiologist towards new diagnostic frontiers.

Intelligent architecture, Italian design and premium ergonomics elevate everyday **clinical experience** as never before.



INNOVATION



IMAGE QUALITY



CLINICAL EXPERIENCE



CONNECTIVITY

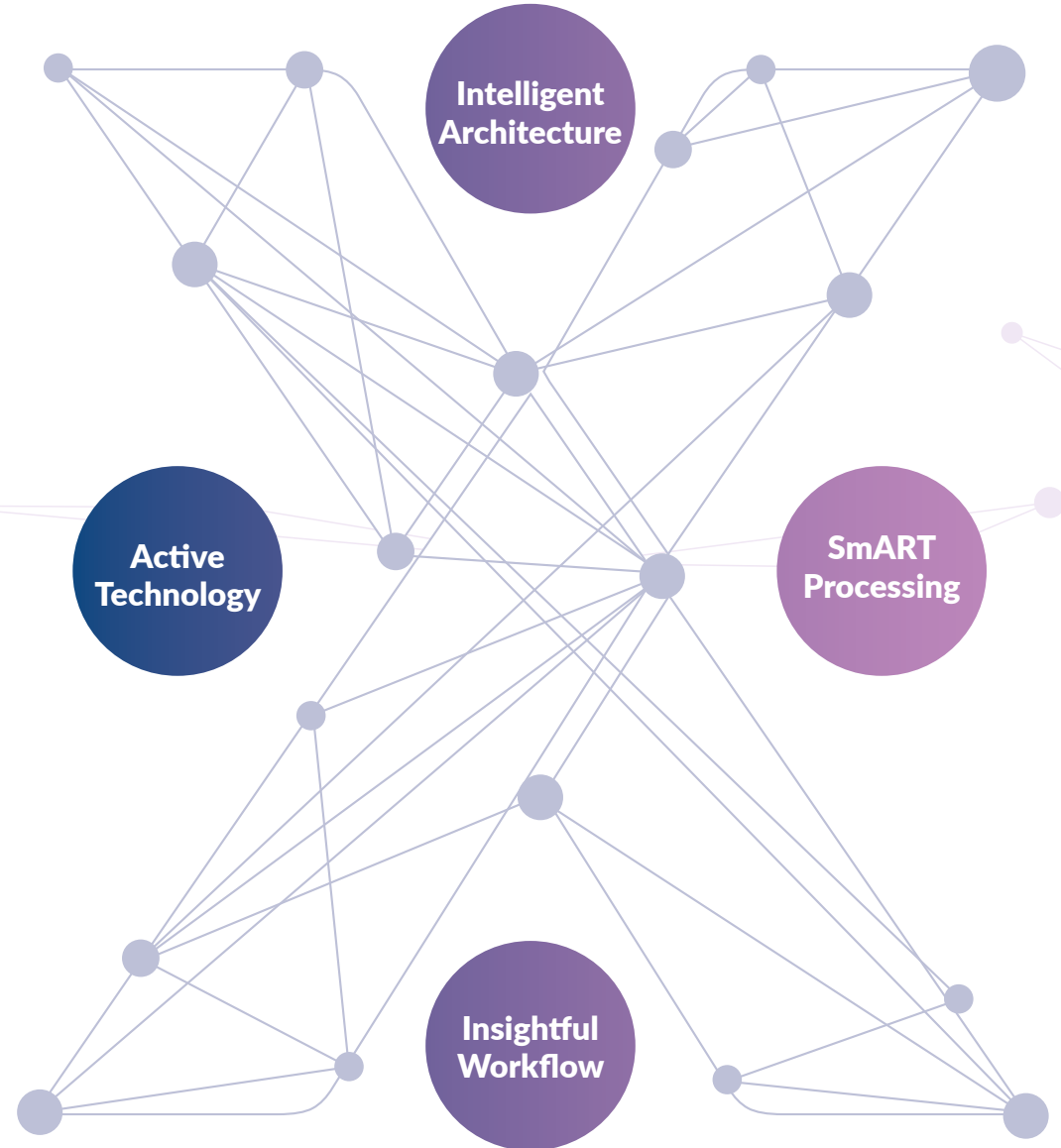


CUSTOMER CARE



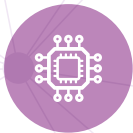
Infinite horizons in innovation

XULTRATM
P L A T F O R M



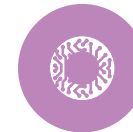


Thanks to the new 64bits **Intelligent Architecture** and faster GPU computing capabilities*, new processing techniques provide multitasking operations to maximize efficiency in all working conditions.



Embedded-core **Active Technology** combined with IQProbes deliver smart focalization and color quantification processing to reach unprecedented performance.

*vs previous product line



State-of-the-art **smART Processing** with Empowered New Generation XView, MView, and @Speed ultrasound velocity setting, enhance image quality for immediate diagnosis.



Insightful Workflow: @Scan, @Doppler, **AutoOB**, and **Zero-click** technologies allow to elevate clinical experience.

Focus more on patients and less on parameters with the exclusive @asyMode and @asyColor intuitive finger-touch image optimization and intelligent algorithms.

Infinite horizons in image quality



The high-quality **Barco Eonis** display presents sharp, bright images with high contrast and a wide viewing angle. Eonis uses the latest in advancements in LED backlight technology, ensuring a **higher brightness** that can be maintained over a longer period of time.

The display's unique front consistency sensor ensures fast power-up and continuous **luminance stability**.

Extend the horizons with **Full screen capability** and **Extended Field of View** modality.

Active technology iQProbe with appleprobe stressless ergonomic experience, high sensitivity matching layers, thermal efficiency, and **Single Crystal Technology** provide optimal spatial and contrast resolution to achieve **top level** image quality.



Infinite horizons in connectivity and multimodality

@ Streaming technology allows **real-time streaming** of ultrasound exams together with picture-in-picture Camera on tablet, phone or laptop, opening a new era in connectivity.

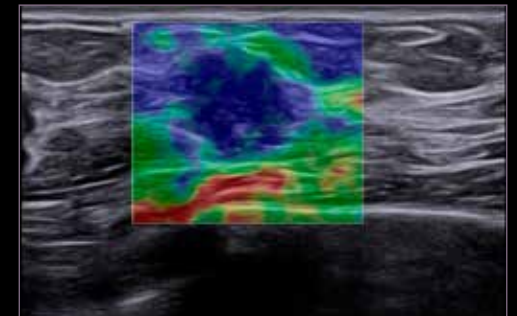
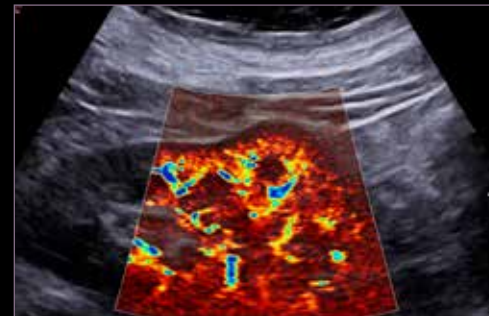
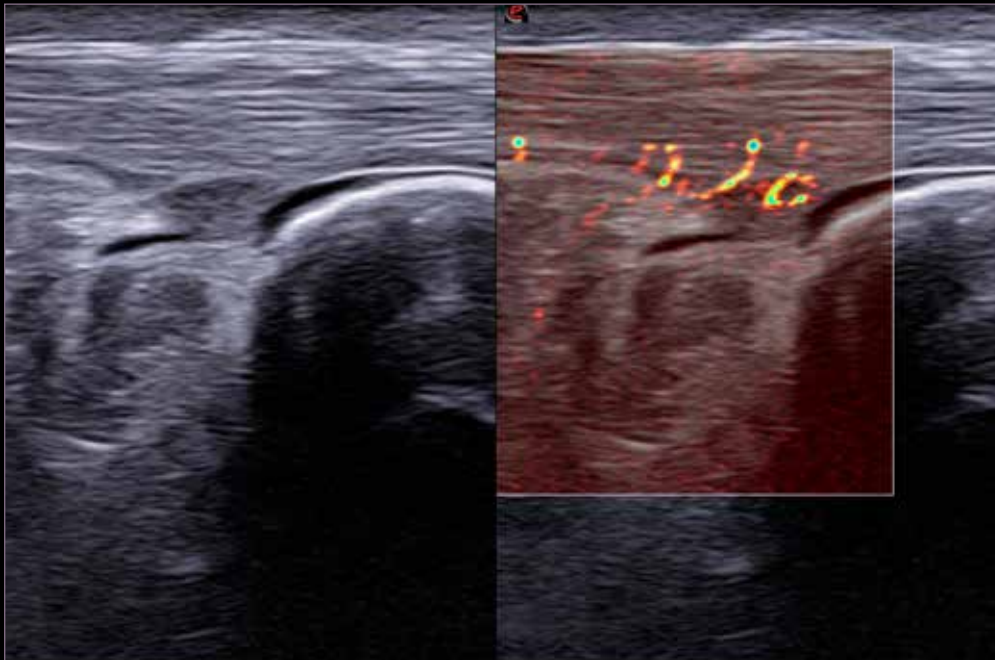
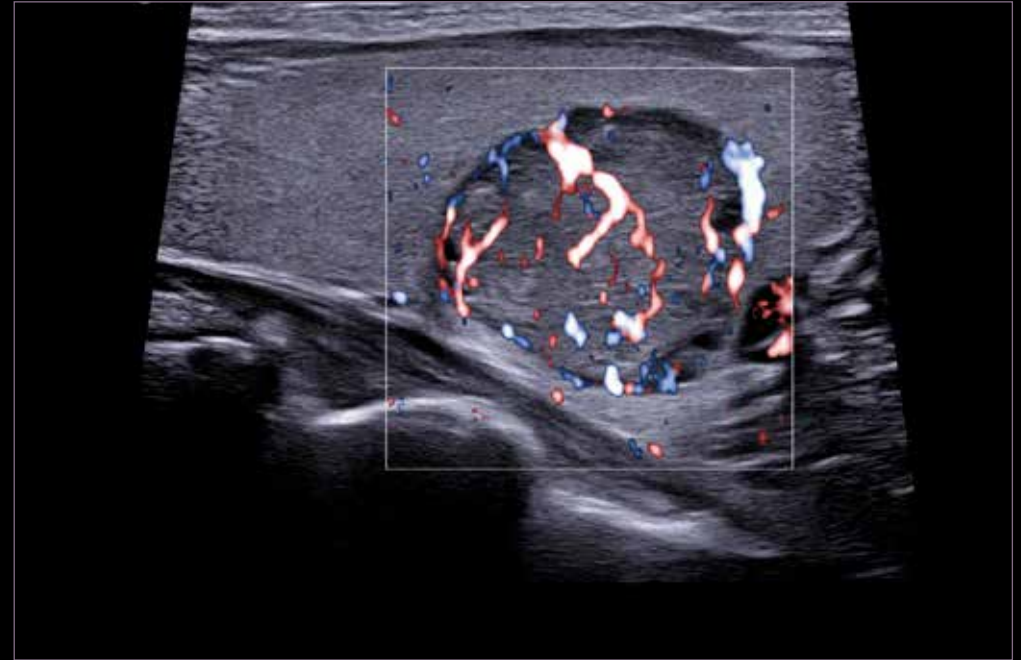
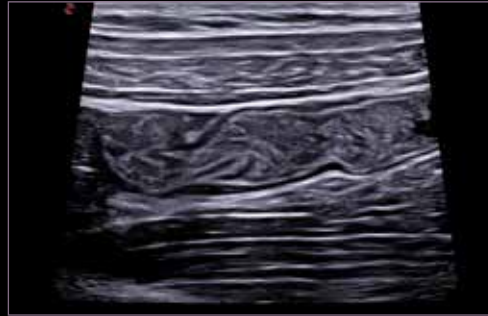
Multimodality Archive as the key-point for effective patient follow-up:

- Full **DICOM** connectivity including Q/R
- MyLab™Desk evo
- MyLab™Tablet



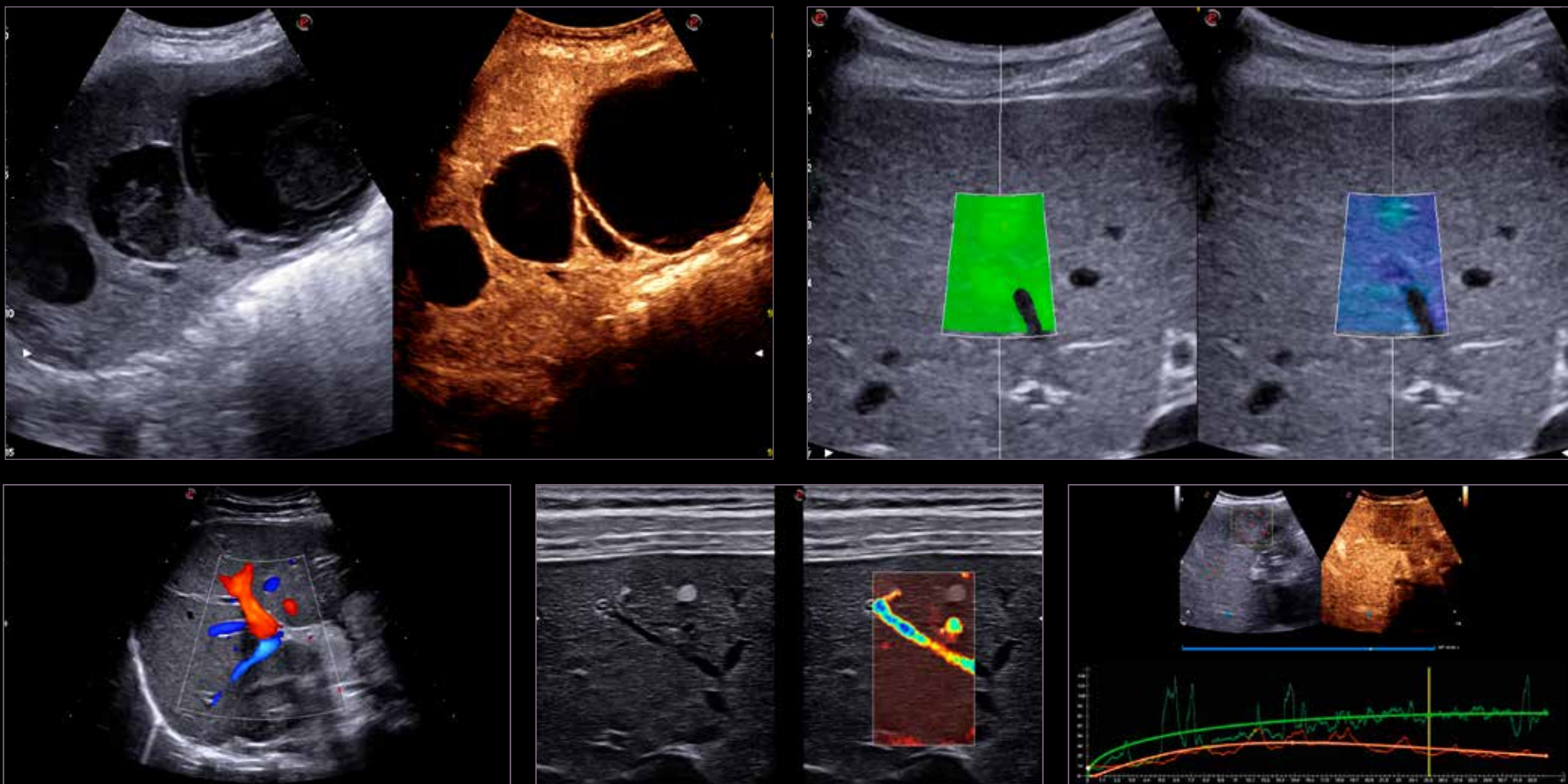
Infinite horizons in General Imaging and Radiology

Optimal image quality even in the most **challenging clinical conditions** is the key to accurate diagnosis.
The perfect answer to all the needs in General Imaging and Radiology.



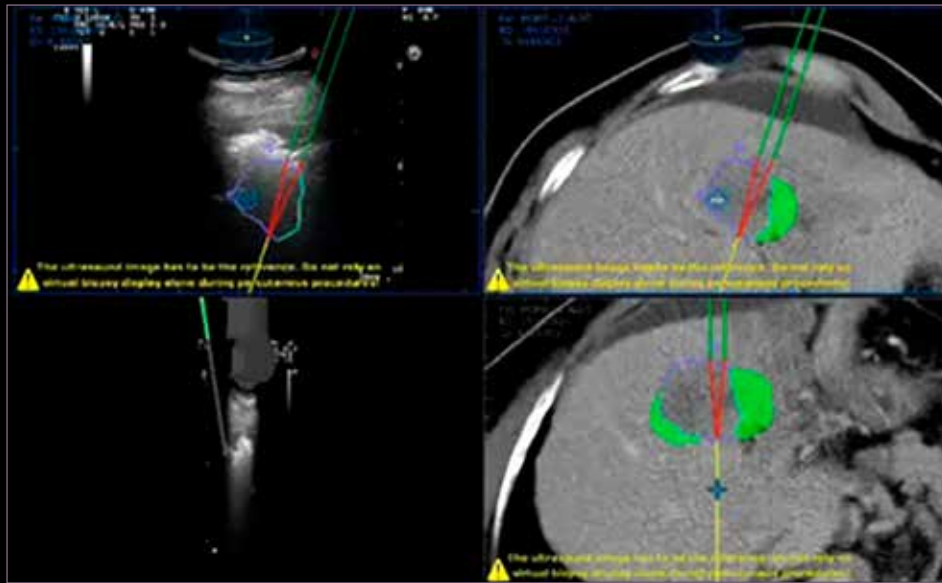
Infinite horizons in Liver Imaging

A complete solution to help **detection, monitoring, and treatment** of hepatic lesions, with a **multiparametric** approach to support integrated diagnosis and therapy guidance.



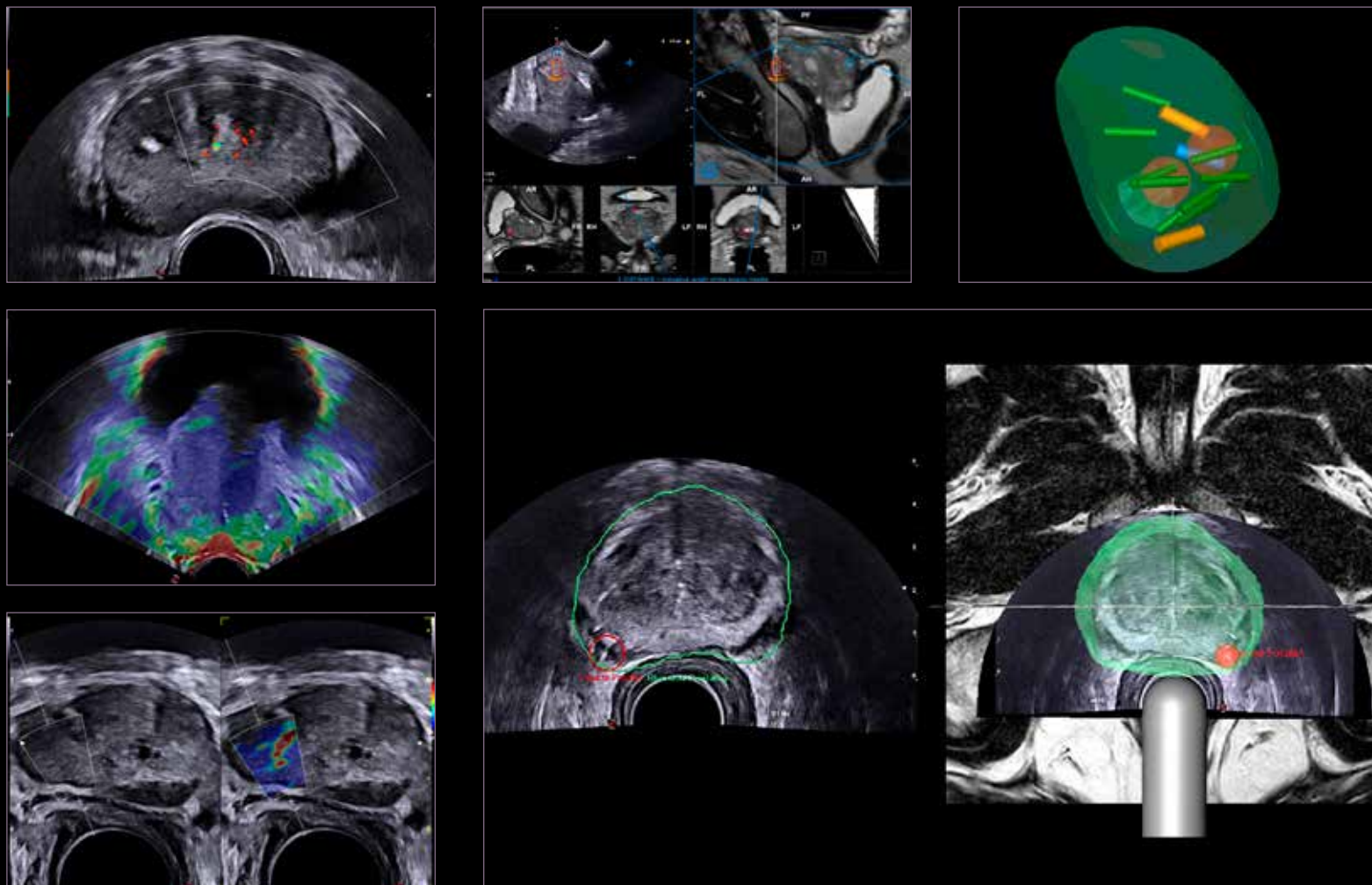
Infinite horizons in Interventional Imaging

Designed to provide the most effective path to patient care, **MyLab™X9** embeds advanced technologies such as **fusion imaging** and **Virtual Navigator**, together with **dedicated probes** to assist the most challenging interventional procedures with the best image guidance.



Infinite horizons in Urology Imaging

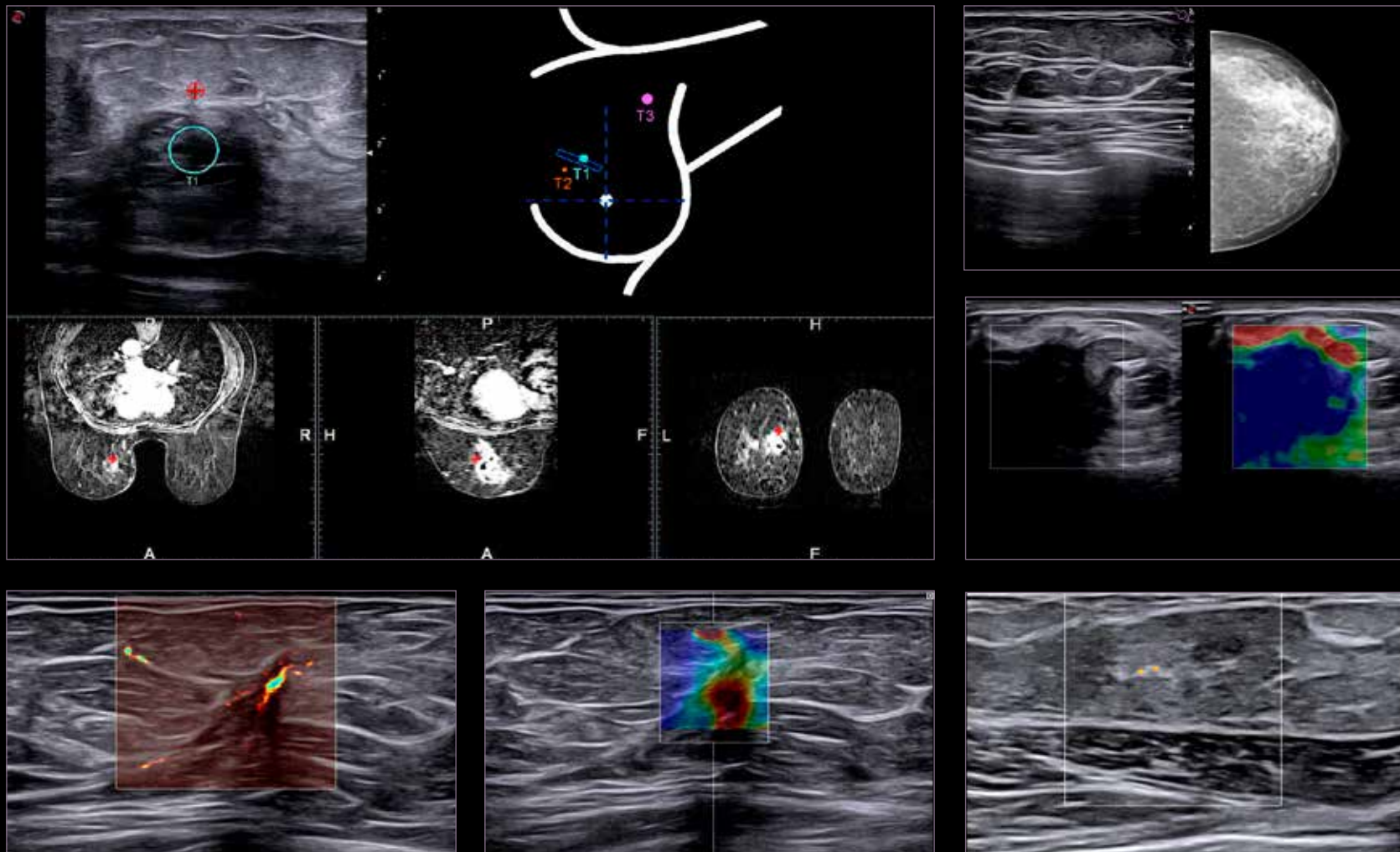
MyLab™ X9 includes Urology-dedicated technologies, like the brand new **UroFusion** which allows fusion imaging with a **transrectal** or **transperineal** approach to guide real-time prostate biopsies with **automatic procedure reporting**.



Transrectal and Transperineal transducers

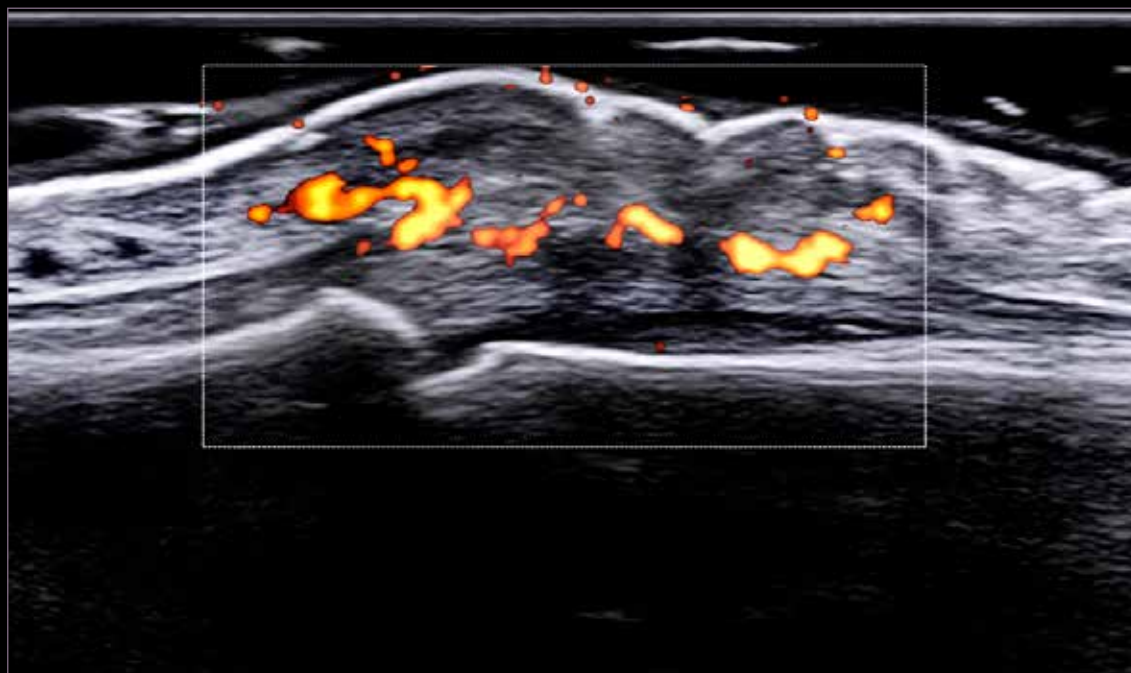
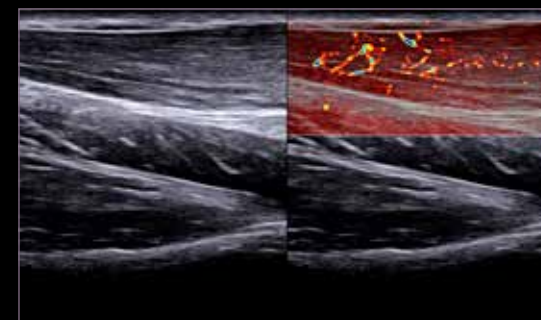
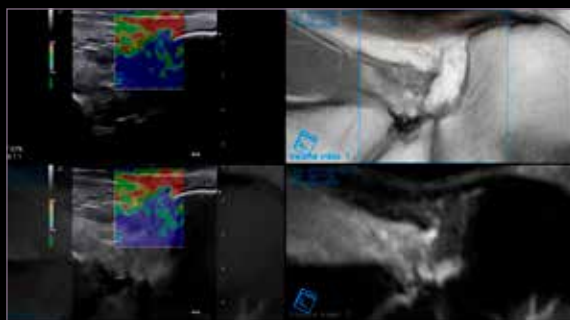
Infinite horizons in Breast Imaging

Committed to patient care, Esaote provides a complete package for Breast Imaging to assist physicians in the **lesions detection, characterization, and follow-up**. With the unique feature **BreastNav™ MRI** feature, breast MRI and ultrasound fusion imaging is now possible thanks to Artificial Intelligence.



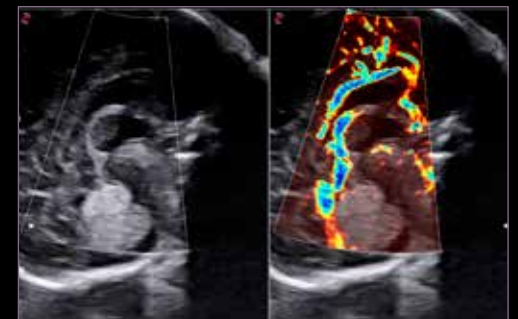
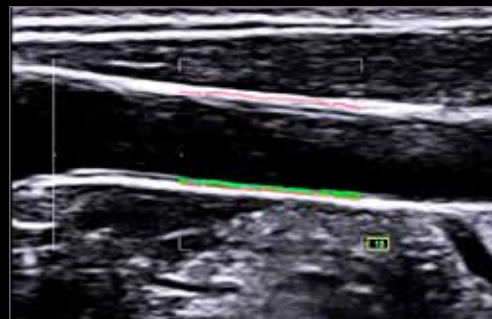
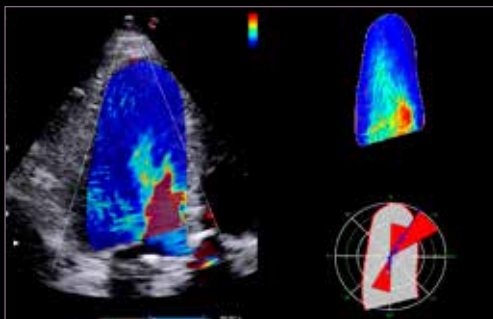
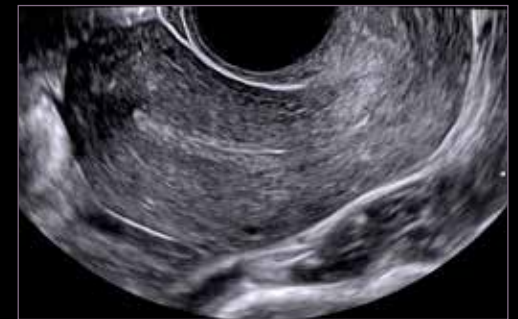
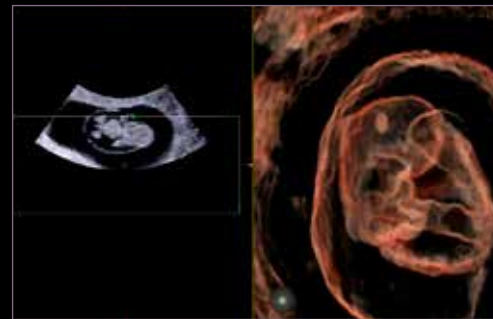
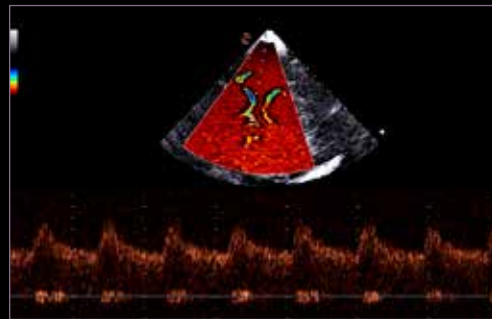
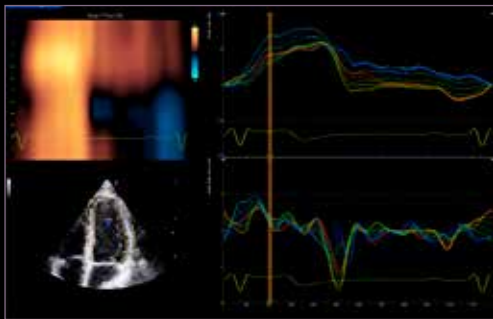
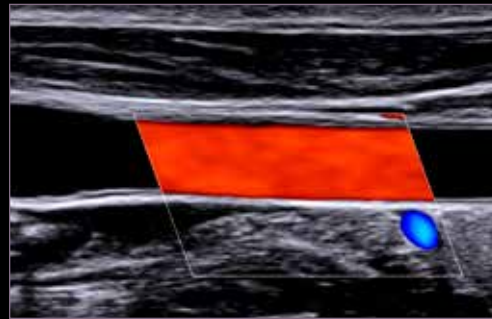
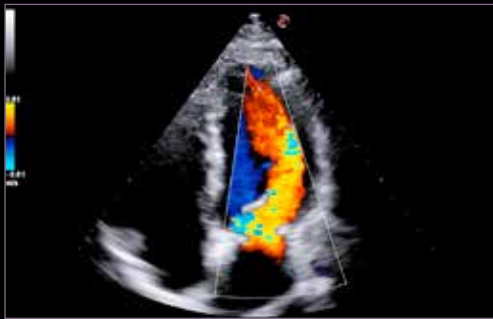
Infinite horizons in Superficial Imaging

As a consolidated partner of MSK, Sports Medicine, and Rheumatology professionals, Esaote introduces unprecedented quality in **superficial imaging** on MyLab™ X9. Lesion detection, treatment, and follow-up of the injury recovery process are supported thanks to the complete range of up to **25MHz** probes, and dedicated technologies, such as **QPack** for vascularization level quantification and **QElaXto 2D** for the assessment of tissue stiffness.



Infinite horizons in Shared Service

With its ultrasound-centric approach, MyLab™X9 guarantees **360° shared-service solutions** to cover every discipline from Women's Health to Cardiovascular and Neurosonology applications.



Customer Care



**3-year
service
coverage**



Remote Technical Support

MyLab™X9 has been designed to provide an optimal user experience through remote assistance, console control sharing, and remote training, to quickly and effectively meet any request.



Probes Coverage

S@renity program provides coverage for all standard probes with no annual limits.



On-site Corrective Maintenance

S@renity program provides On-Site Corrective Maintenance that includes labor and necessary spare parts to repair the system.

Our mission is to **protect** and **maximize** the system **performance** by increasing the return on your investment.

To pursue this goal Esaote has created **S@renity program**, the **3-year service coverage** aimed at allowing to **focus only on diagnostic activity**.

Conditions for additional service coverage may vary depending on your country. Please, contact your Esaote reference to get the conditions valid for your country. Special probes excluded. Accidental damage of probes is not covered. MyLab™X9 Standard configuration Probe Set: 4 qty spare part failure for accidental damage and peripherals are excluded. Remote Service Support requires a high-speed direct Internet connection and depends on regional availability and speed of connection.





www.esaote.com

160000294MA Ver.01



Esaote S.p.A. - sole-shareholder company
Via Enrico Meloni 77, 16152 Genova, ITALY, Tel. +39 010 6547 1, Fax +39 010 6547 275, info@esaote.com

MyLab is a trademark of Esaote spa. BreastNav™ and BreastNav™ MRI are powered by Medcom GmBH. BI-RADS® incorporates the Breast Imaging Reporting and Data System ATLAS of the American College of Radiology, Copyright 1992, 1993, 1995, 1998, 2003, and 2013. The developer of this product is independently owned and operated, and is not an affiliate of the American College of Radiology. The American College of Radiology is not responsible for the contents or operation of this product or its associated software, and expressly disclaims any and all warranties and liabilities, expressed or implied, in connection therewith. CnTI™: The use of Contrast Agents in the USA is limited by FDA to the left ventricle opacification and to characterization of focal liver lesions. HyperDoppler is an Esaote advanced research tool. Technology and features are system/configuration dependent. Specifications subject to change without notice. Information might refer to products or modalities not yet approved in all countries. Product images are for illustrative purposes only. For further details, please contact your Esaote sales representative.

Please visit us online
for more information

