

MAGNIFY  
YOUR  
POSSIBILITIES.

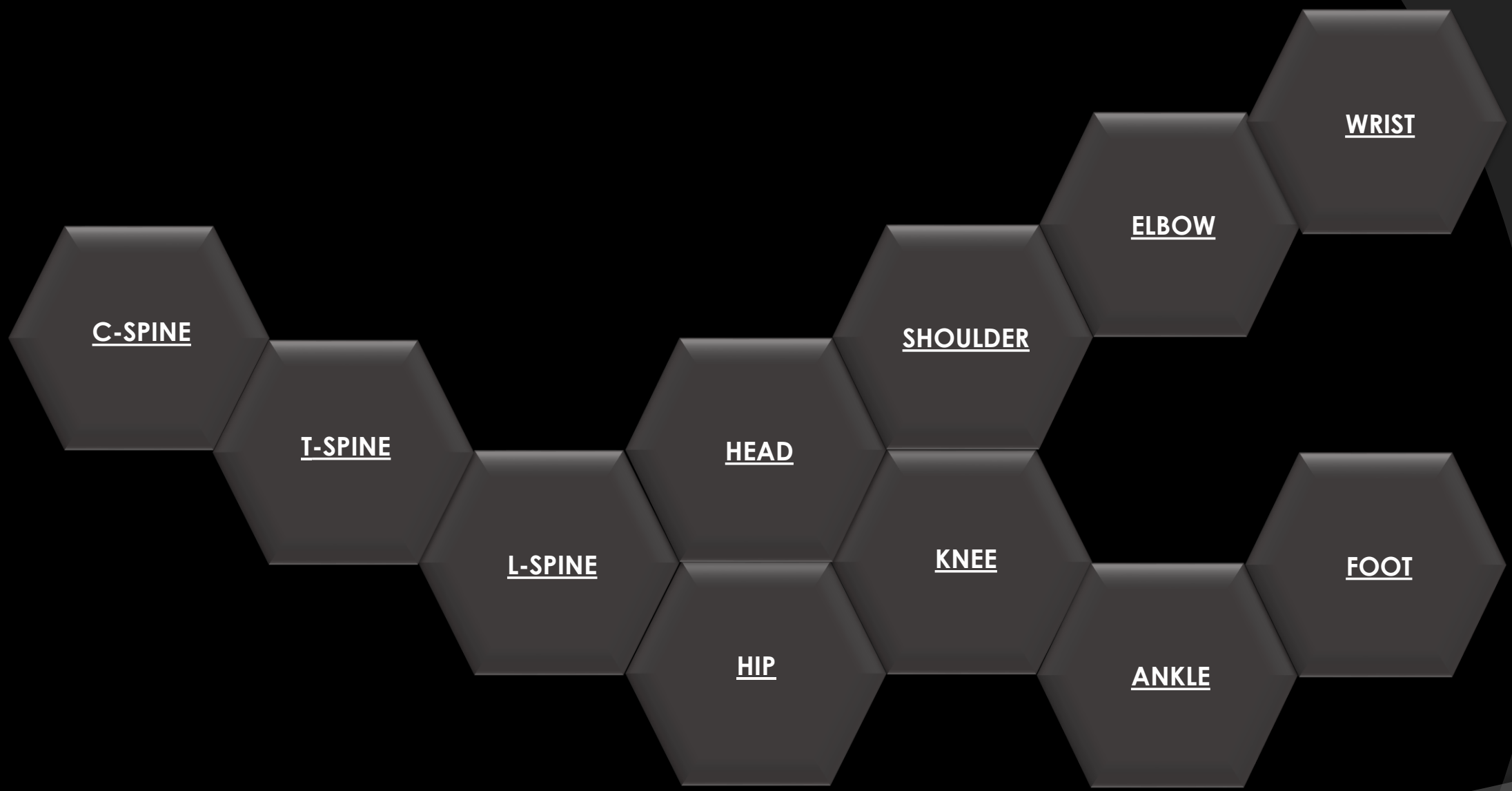
This is **M**agnifico

**C**LINICAL  
**C**ASES



NEVER STOP SEEING THE UNSEEN.

**@saote**







# C-Spine

Magnifico  
open



SE T1 - Sagittal



FSE T2- Sagittal



FSTIR - Sagittal

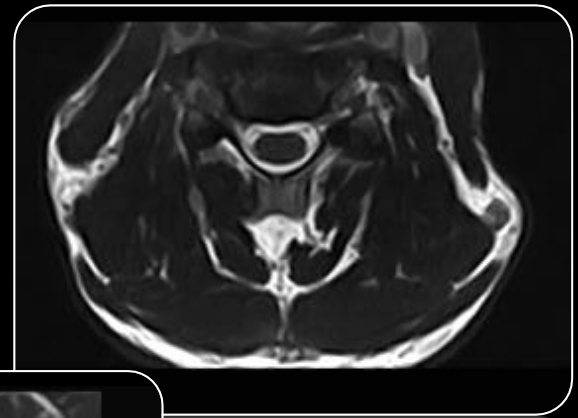


# C-Spine

Magnifico  
open



3D Hyce (Steady State) - Coronal  
0.4 mm isotropic



MPR - Axial



MPR - Sagittal



GE T2\* - Axial





# T-Spine

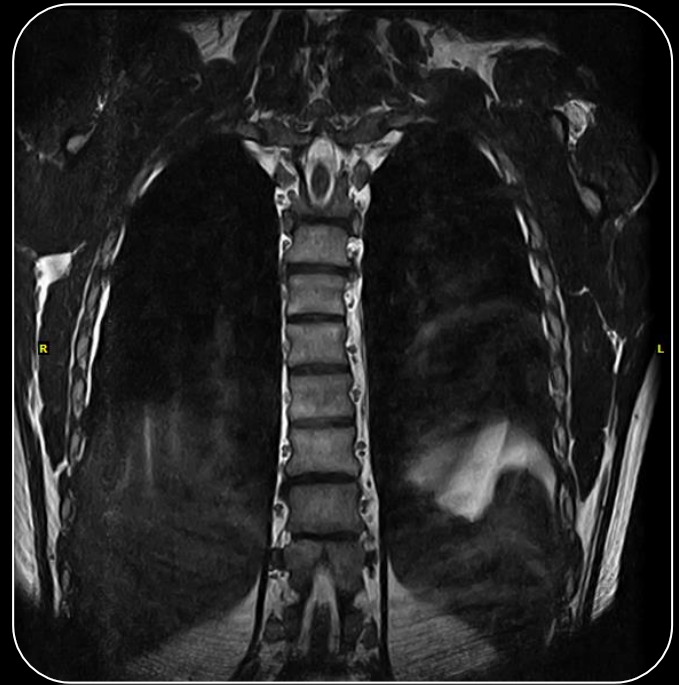
Magnifico  
open



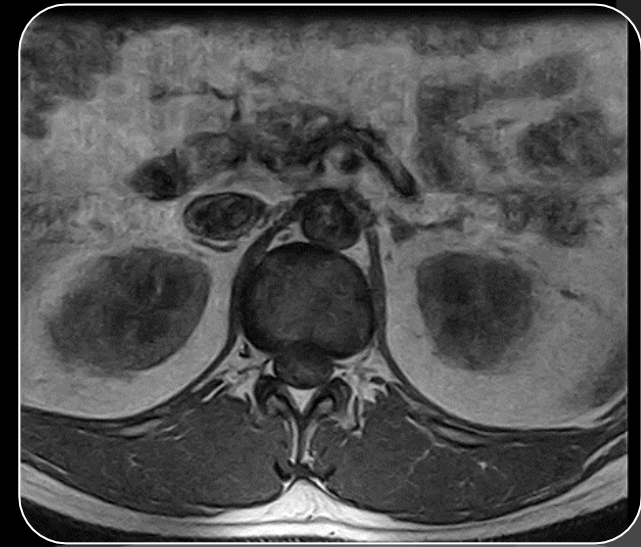
FSE T2 - Sagittal



SE T1 - Sagittal



3D HYCE - Coronal



SE T1 - Axial



# L-Spine

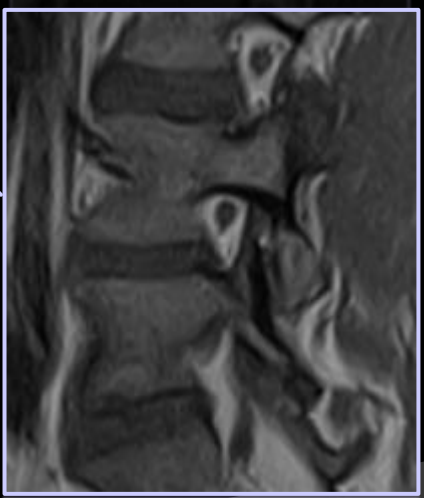
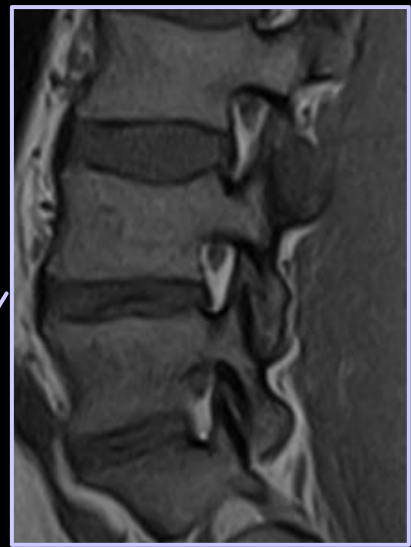
Magnifico  
open



FSE T2 - Sagittal



SE T1 - Sagittal





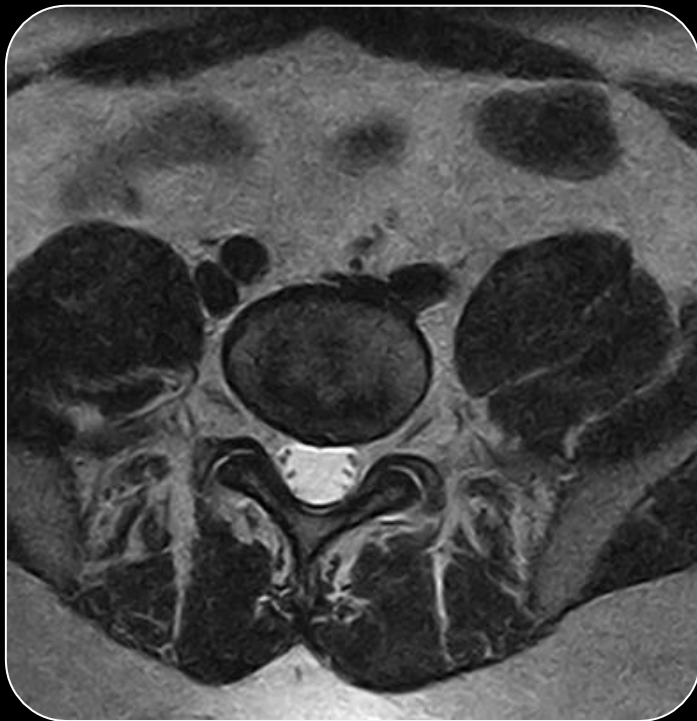


# L-Spine

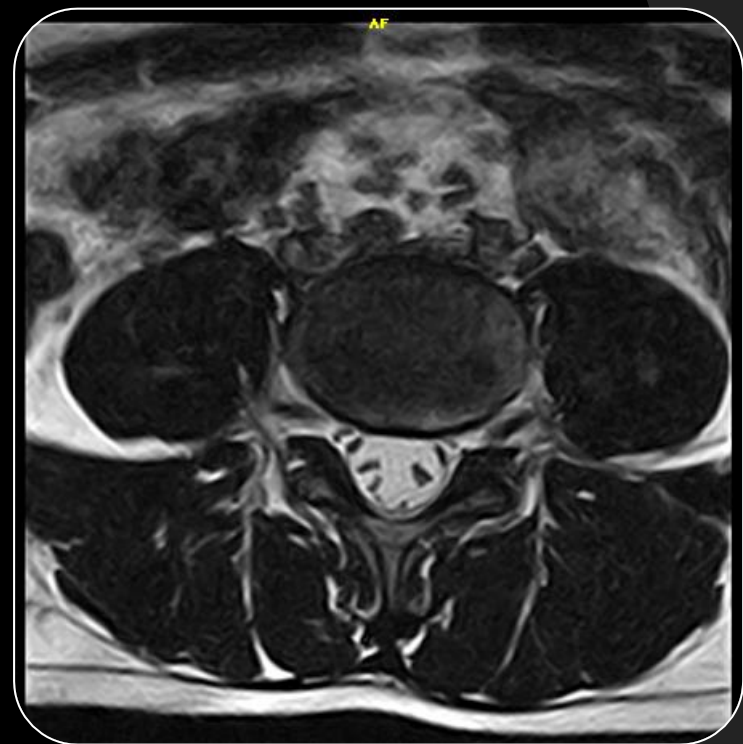
Magnifico  
open



SE T1 - Axial



FSE T2 - Axial

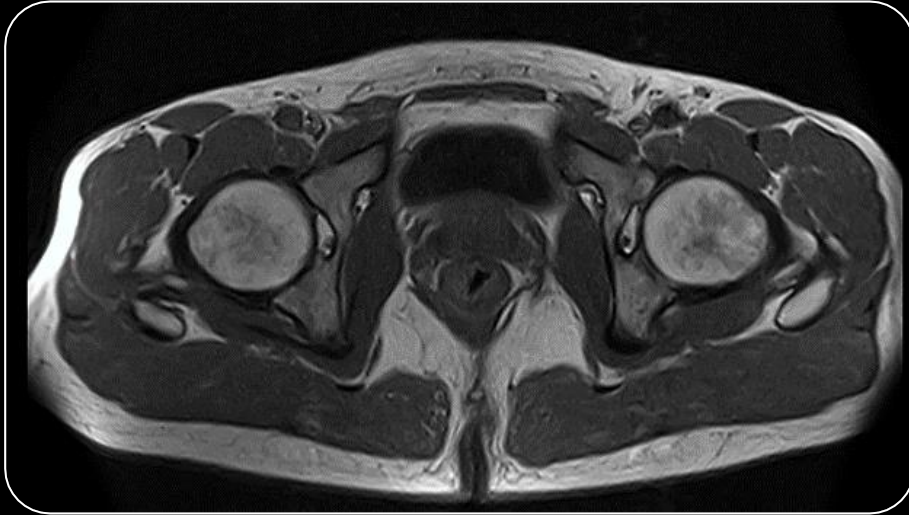


3D Hyce (Steady State) - Axial  
0.4 mm isotropic



# Hip

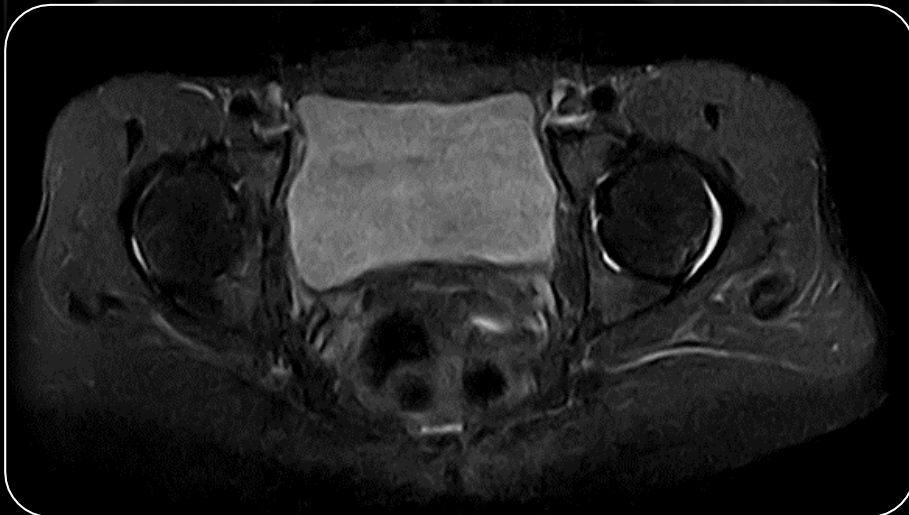
Magnifico  
OPEN



SE T1 - Axial



FSE T2 - Axial



FSTIR - Axial



SPED (DIXON Fat & Water Separation) –  
Axial





# Hip

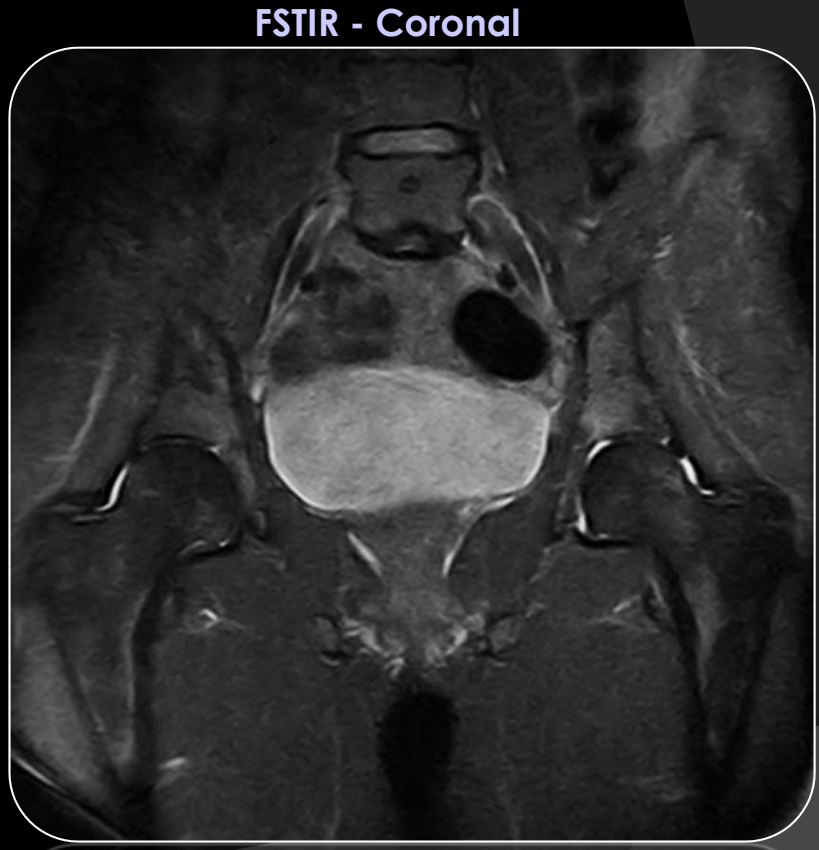
Magnifico  
OPEN



SE T1 - Coronal



FSE T1 - Coronal

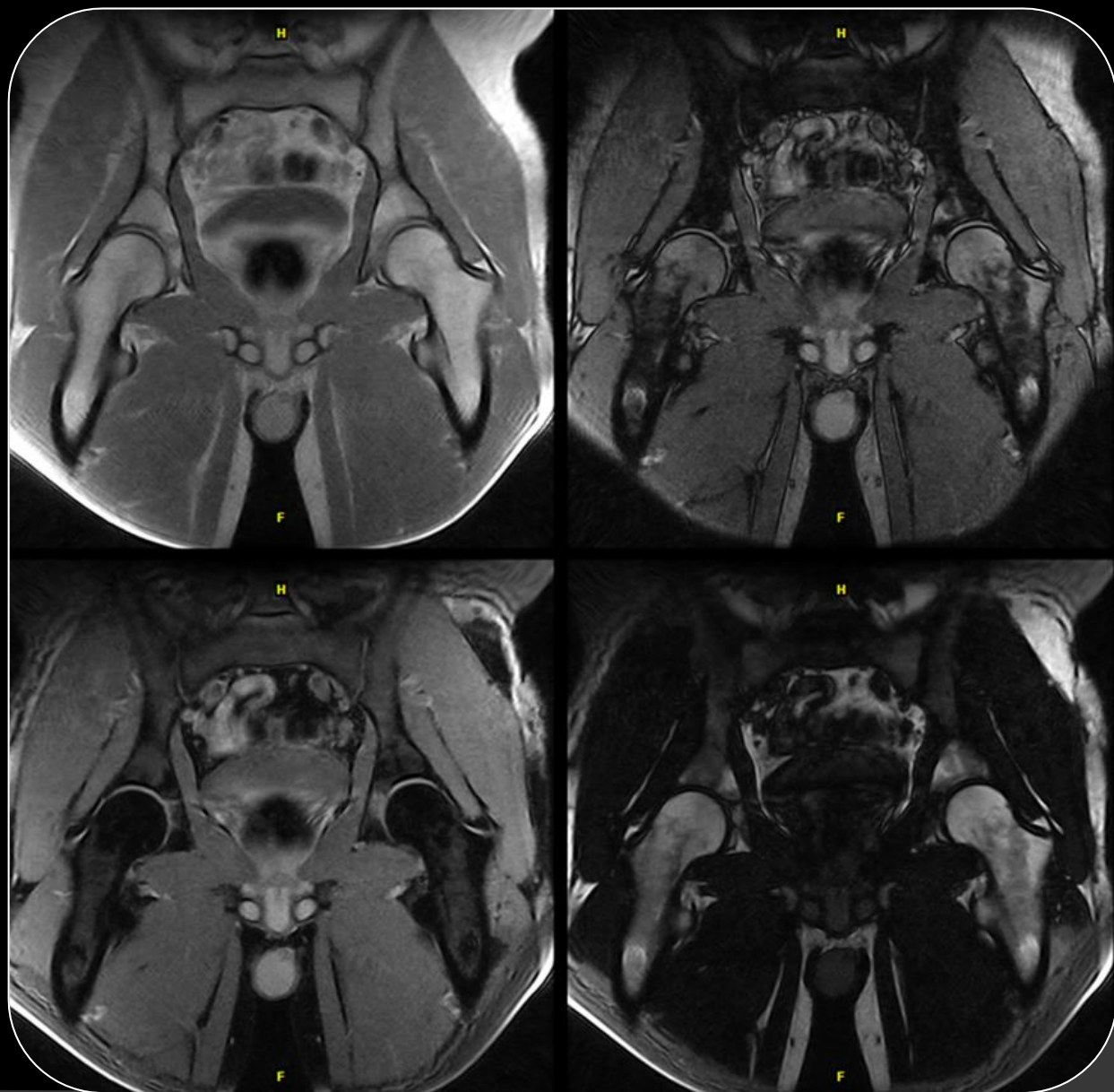


FSTIR - Coronal



# Hip

Magnifico  
open



SPED (DIXON Fat & Water Separation) –  
Coronal



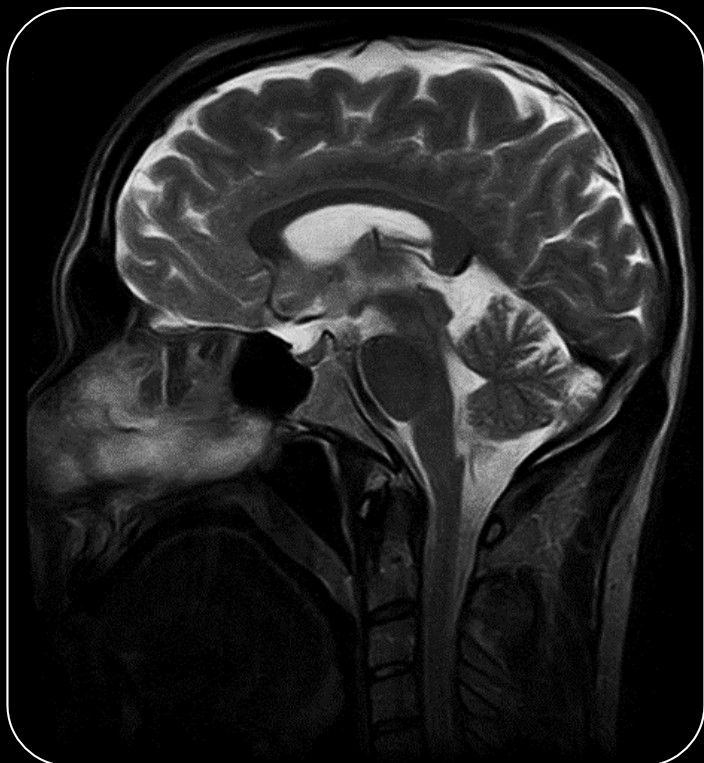


# Head

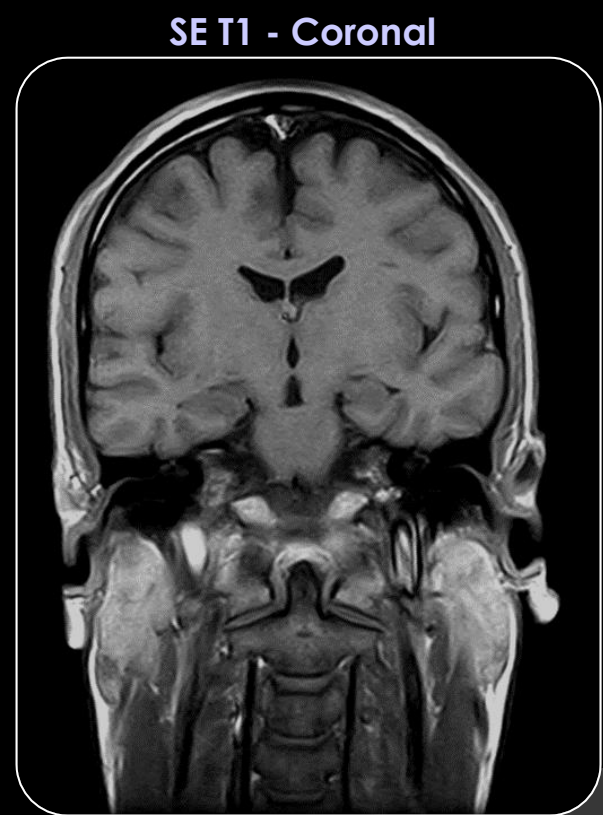
Magnifico  
open



3D SST1 - Coronal



FSE T2 - Sagittal



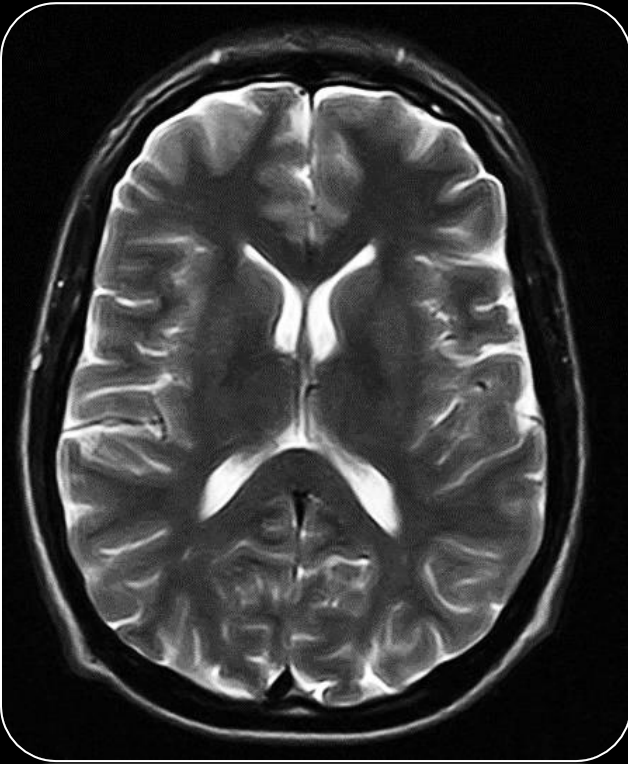
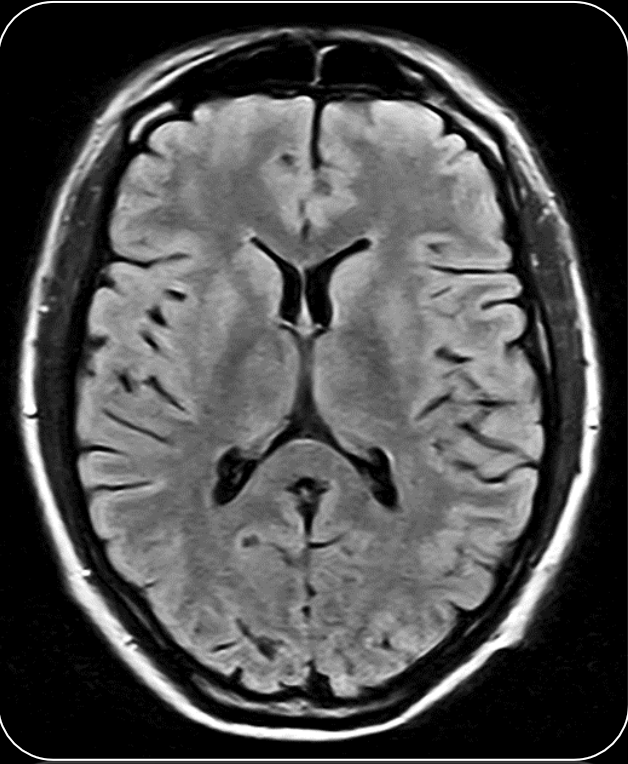


# Head

Magnifico  
open



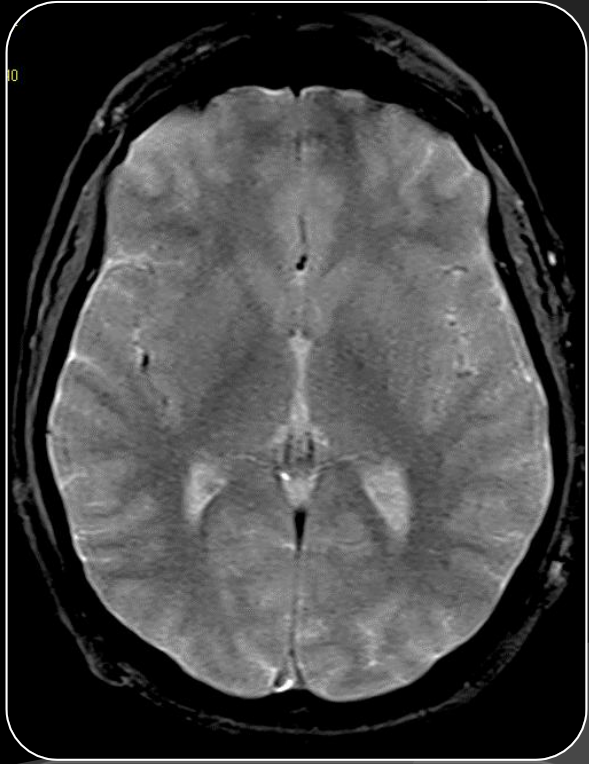
FLAIR - Axial



FSE T2 - Axial



GE T2\* - Axial







# Shoulder

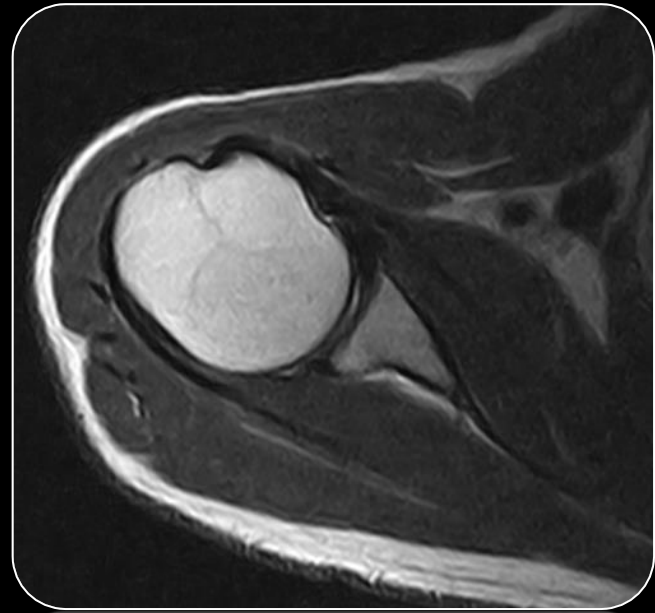
Magnifico  
open



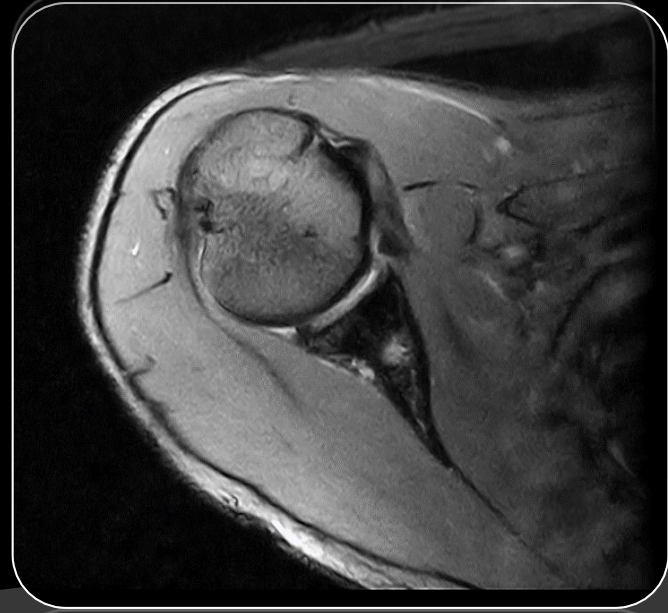
SE T1 - Coronal



FSTIR - Coronal



FSE T2 - Axial

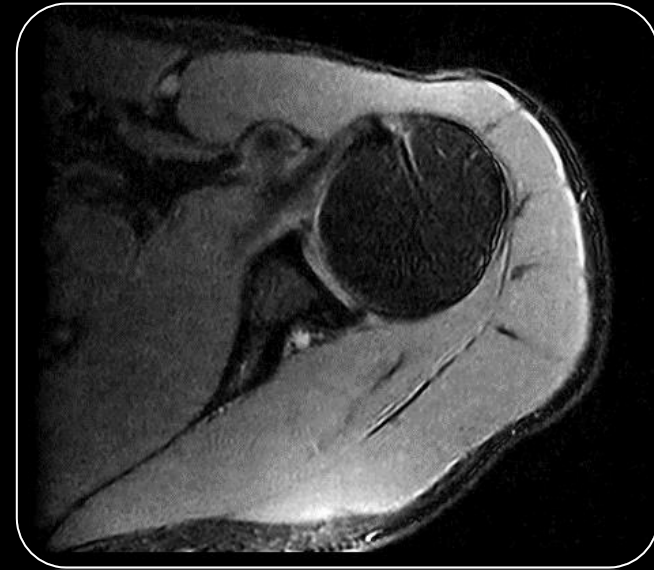


GE T2\* - Axial



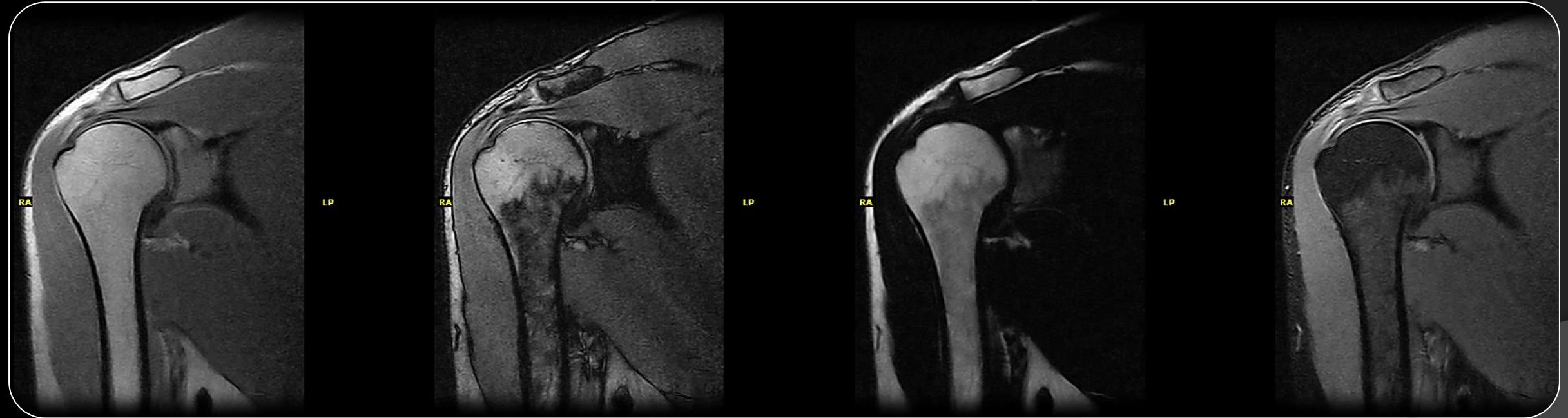
# Shoulder

Magnifico  
open



SPED (DIXON Fat & Water Separation) –  
Axial

SPED (DIXON Fat & Water Separation) -  
Coronal







# Knee

Magnifico  
open



SE T1 - Sagittal



3D SHARC - Coronal



FSTIR - Coronal



FSTIR - Sagittal



# Knee

Magnifico  
open



FSE PD - Sagittal



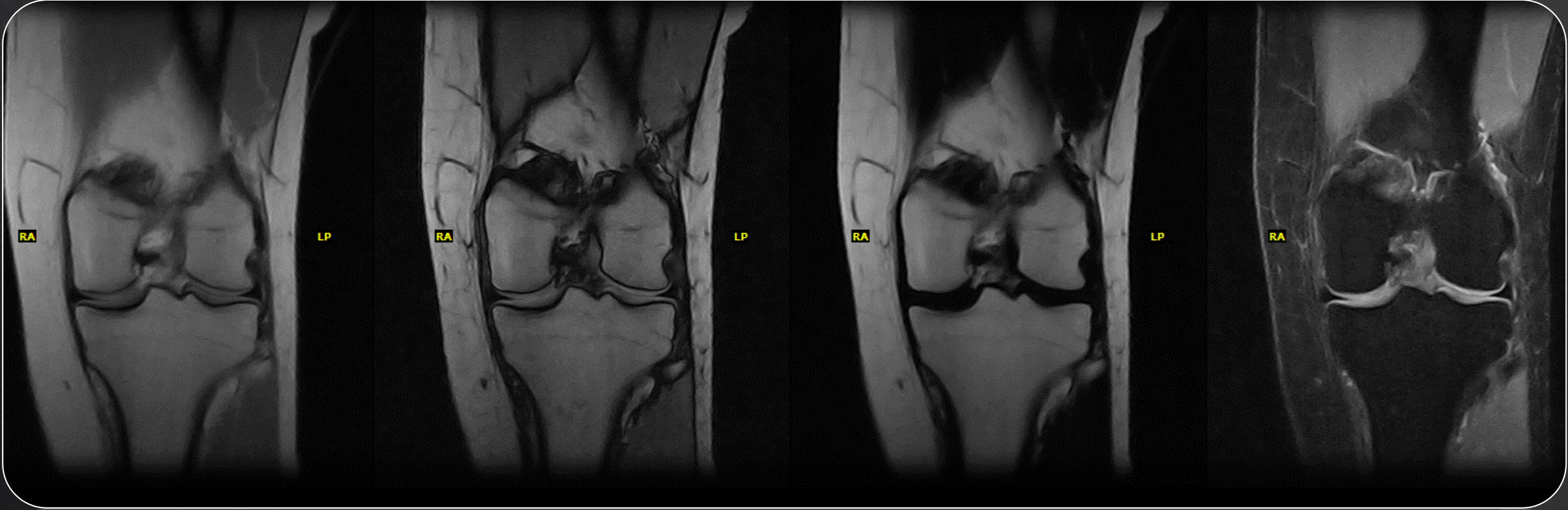
FSE T2- Sagittal





# Knee

Magnifico  
open

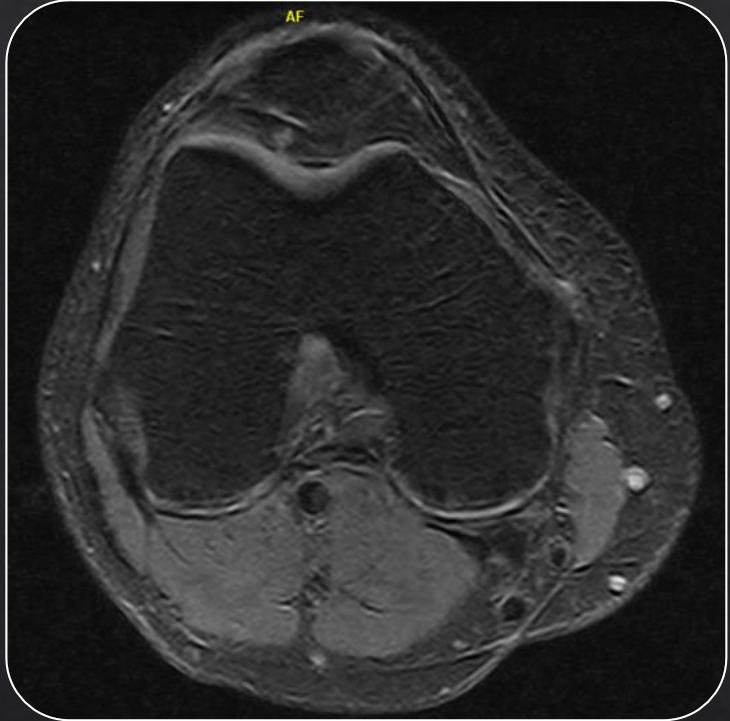


SPED (DIXON Fat & Water Separation) –  
Coronal



# Knee

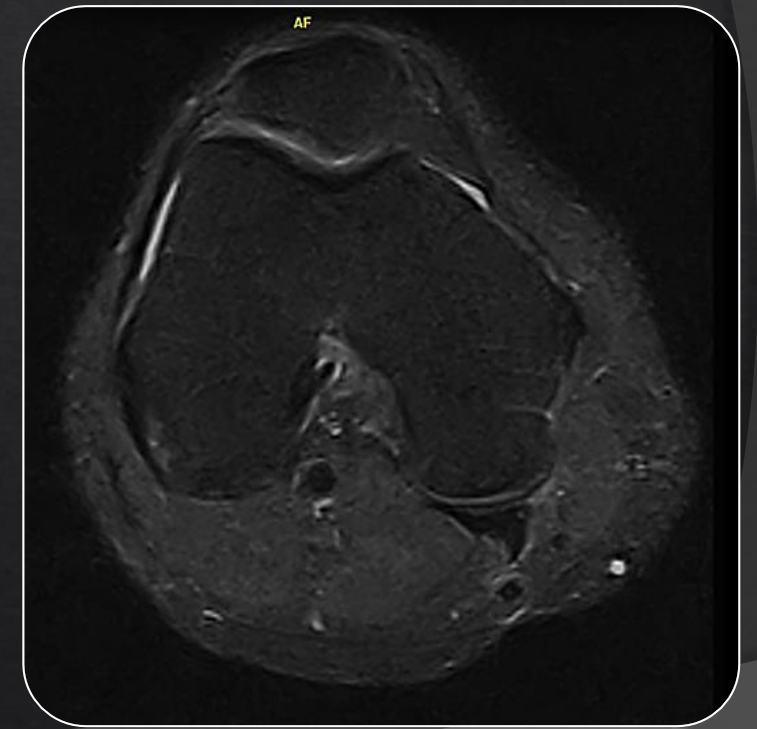
Magnifico  
open



SPED (DIXON Fat & Water Separation) - Axial



FSE T2 - Axial



FSTIR - Axial





# Ankle

Magnifico  
open



SE T1- Sagittal



SPED (DIXON Fat & Water Separation) -  
Sagittal

3D SHARC - Sagittal



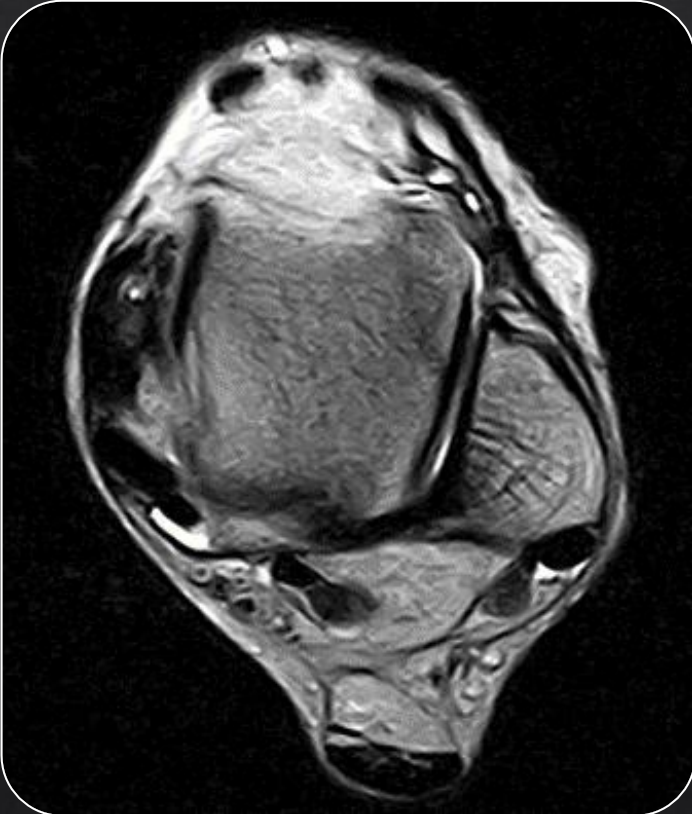


# Ankle

Magnifico  
open



FSE T2 - Axial



FSE T2 - Coronal



FSTIR - Coronal





# Foot

Magnifico  
open



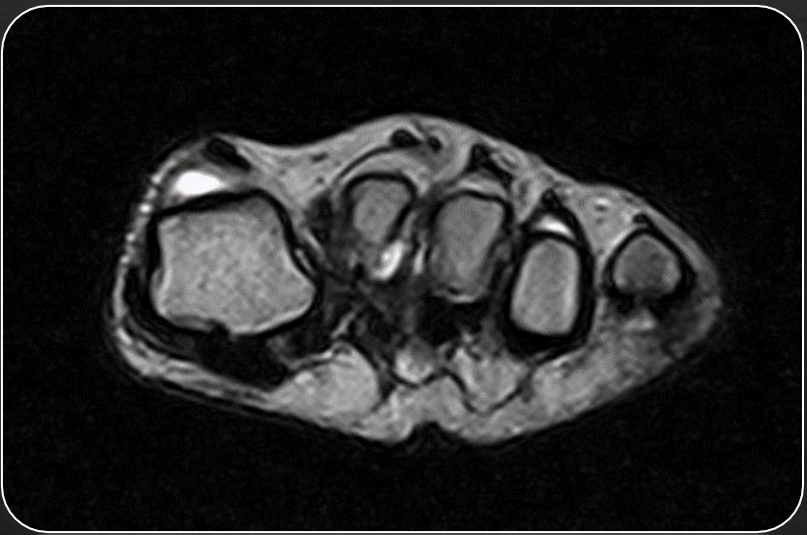
SE T1 - Coronal



FSE T2 - Coronal



FSE T2 - Axial





# Elbow

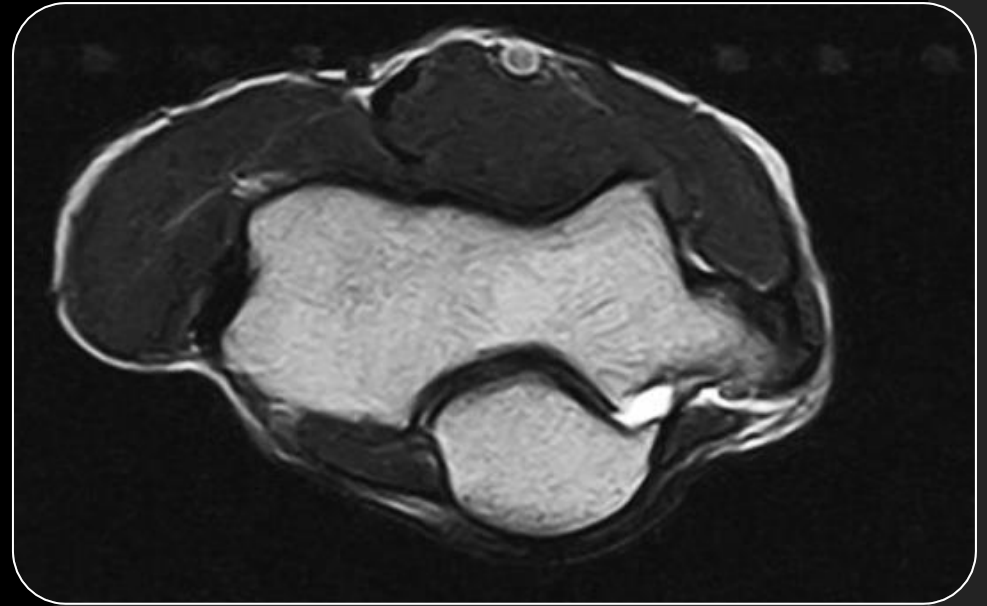
Magnifico  
open



SE T1- Coronal



GE T2 - Sagittal



FSE T2 - Axial





# Wrist

Magnifico  
open



SE T1 - Coronal



3D SHARC (Steady State) - Coronal  
0.4 mm isotropic



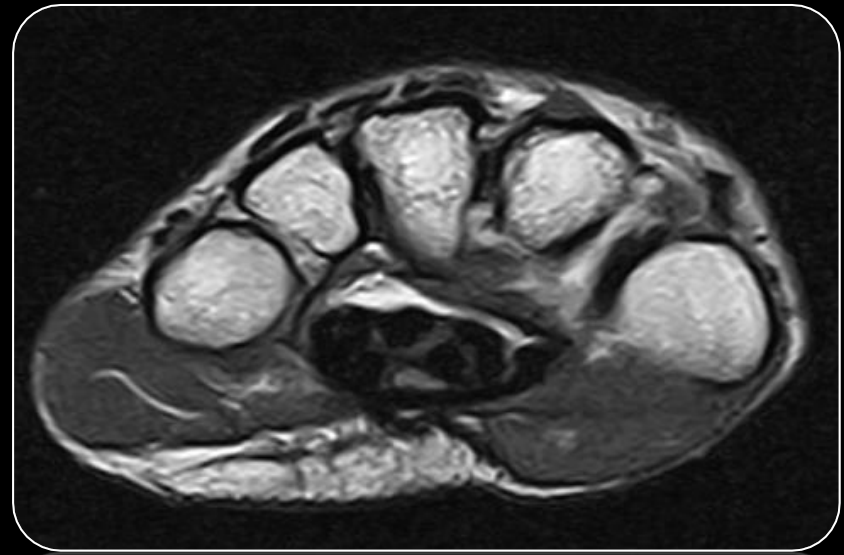
STIR - Coronal



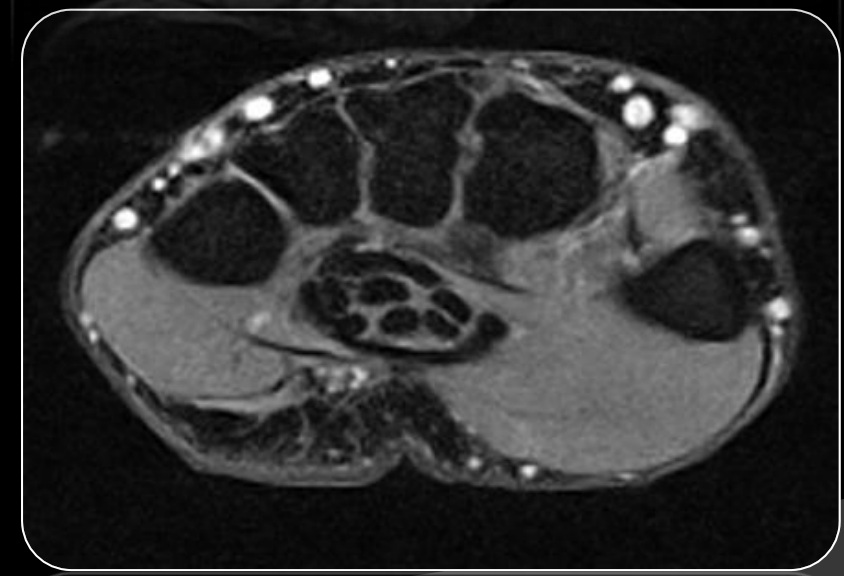
# Wrist



FSTIR - Coronal



FSE T2 - Axial



SPED (DIXON Fat & Water Separation) –  
Axial





Information about the Esaote Group and  
its products is available at

[www.esaote.com](http://www.esaote.com)