

In touch with Physiotherapy



MyLabOneTM
Musculoskeletal

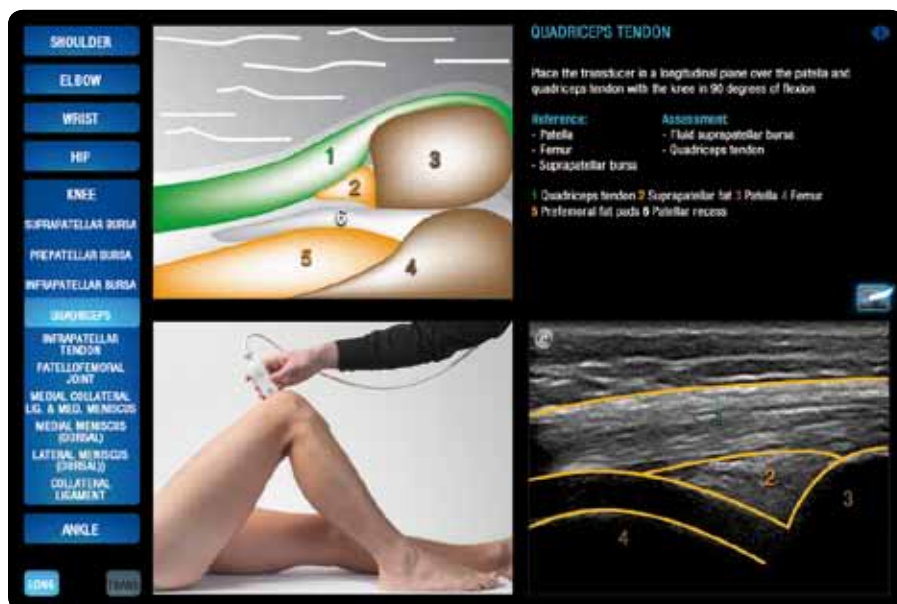


- High-resolution and high-contrast imaging
- Simple and intuitive user interface
- Full touch screen
- High Sensitivity Color Doppler
- MyLibrary user reference guide
- Dedicated accessories and tools
- Wireless connectivity
- Dedicated ergonomics

Technologies

- **XHF** Up to **22 MHz** Transmission Frequency
- **XView** Image Enhancement
- **MView** Spatial Multi-View Imaging
- **TEI™** Tissue Enhancement Imaging

MyLibrary

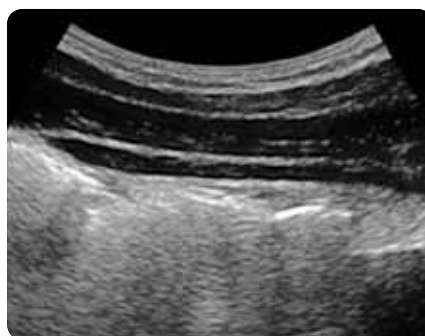


Made in cooperation with MSc Marc J.H. Schmitz, Physiotherapist, Manual therapist, Ultrasonographer. Kine Care, Roermond and Amsterdam, The Netherlands.

Probes range



Shoulder, Longitudinal Supraspinatus Tendon



Obliques & Transversus Abdominis



Elbow, Longitudinal Coronoid Fossa

169 0053 00 (MA Rev.02)