

In touch with Physiotherapy



MyLabOne[™]
Musculoskeletal



- High-resolution and high-contrast imaging
- Simple and intuitive user interface
- Full touch screen
- High Sensitivity Color Doppler
- MyLibrary user reference guide
- Dedicated accessories and tools
- Wireless connectivity
- Dedicated ergonomics

Technologies

- **22 MHz XHF** Up to **22 MHz** Transmission Frequency
- **XView** Image Enhancement
- **MView** Spatial Multi-View Imaging
- **TEI™** Tissue Enhancement Imaging

MyLibrary

SHOULDER
ELBOW
WRIST
HIP
KNEE
SUPRAPATELLAR BURSA
PREPATELLAR BURSA
INFRAPATELLAR BURSA
QUADRICEPS
INFRAPATELLAR TENDON
FATTELOFEMORAL JOINT
MEDIAL COLLATERAL LIG. & MED. MENISCUS
MEDIAL MENISCUS (SERIAL)
LATERAL MENISCUS (SERIAL)
COLLATERAL LIGAMENT
ANKLE

QUADRICEPS TENDON

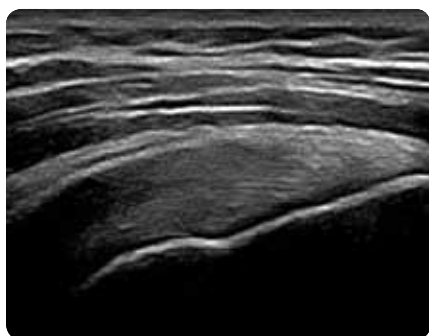
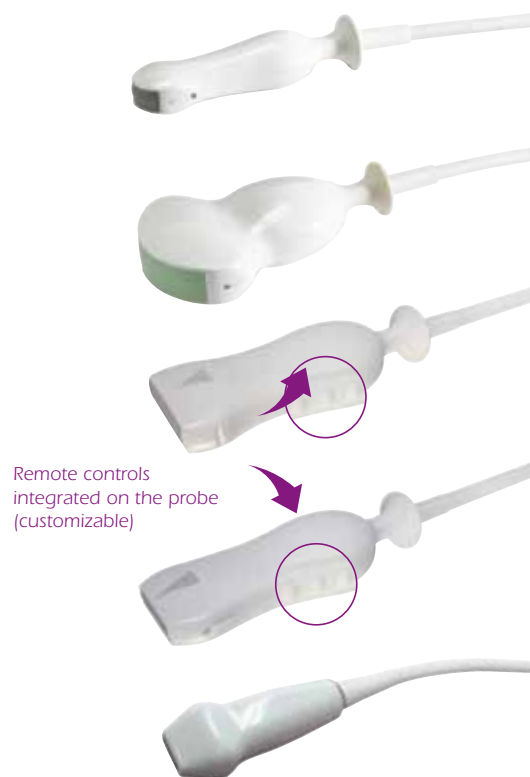
Place the transducer in a longitudinal plane over the patella and quadriceps tendon with the knee in 90 degrees of flexion.

| Reference: | Assessment: |
|-----------------------|-----------------------------|
| - Patella | - Fluid suprapatellar bursa |
| - Femur | - Quadriceps tendon |
| - Suprapatellar bursa | |

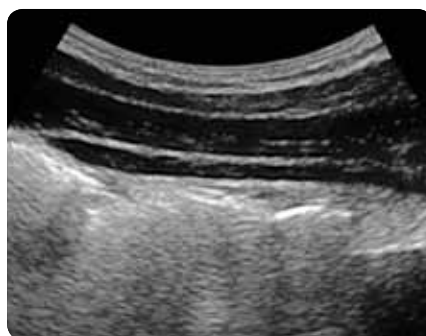
1 Quadriceps tendon 2 Suprapatellar fat 3 Patella 4 Femur
5 Prepatellar fat pads 6 Patellar recess

Made in cooperation with MSc Marc J.H. Schmitz, Physiotherapist, Manual therapist, Ultrasonographer. Kine Care, Roermond and Amsterdam, The Netherlands.

Probes range



Shoulder, Longitudinal Supraspinatus Tendon



Obliques & Transversus Abdominis



Elbow, Longitudinal Coronoid Fossa

169 0053 00 (MA Rev.02)