

In touch with Rheumatology



MyLabOne[™]
Musculoskeletal



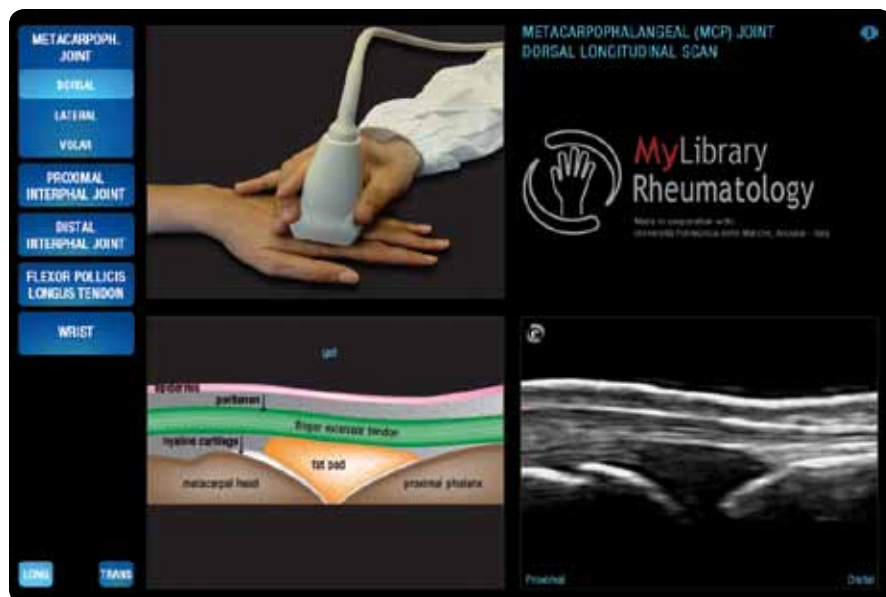
- Dedicated ergonomics
- High-resolution imaging
- Simple and intuitive user touch screen interface
- High Sensitivity Color and Power Doppler
- On-board MyLibrary reference guide
- Dedicated accessories and tools
- Up-to-date connectivity, including wireless

- Up to **22 MHz** Transmission Frequency
- **XView** Image Enhancement
- **MView** Spatial Multi-View Imaging
- **Hi-Sensitivity** Power Doppler
- Measurements **under 1 mm** with **Two Decimal Digits**

A universe under the millimeter™



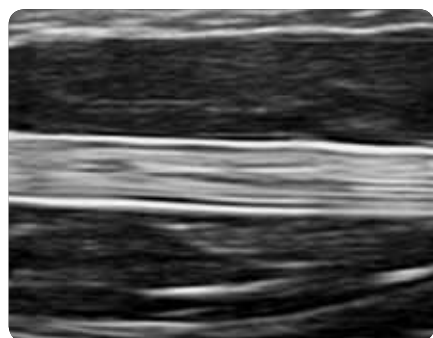
MyLibrary



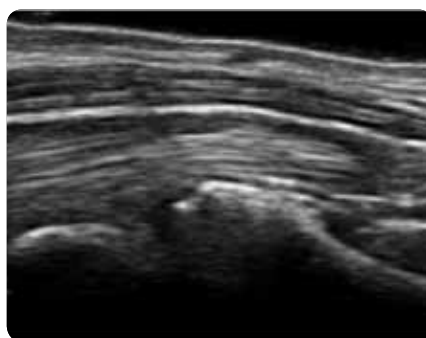
Made in cooperation with Prof. Walter Grassi - Cattedra di Reumatologia, Università Politecnica delle Marche, Ancona, Italy.

Probes range

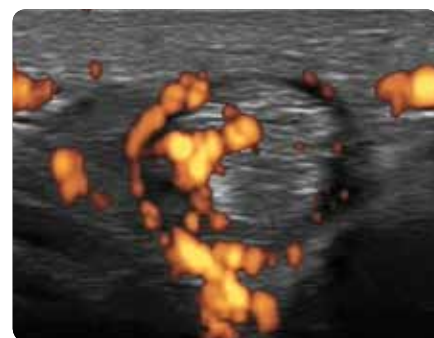
Remote controls integrated on the probe (customizable)



Flexor Pollicis Longus Tendon



Wrist, volar longitudinal



Joint inflammation displayed with high-sensitivity Power Doppler

169 0043 00 (MA Rev.01)